

| Product Number | Product Description | Product | Product |
|----------------|---------------------|---------|---|
| 2100082 | 10 9/14/2008 ARG | 4013 | LINER 42X47 2MIL BGL48XHVY BROWN |
| 2181553 | 8 9/9/2008 ARG | 4015 | 36X60 2 MIL BROWN LINER S/O NUNU |
| 1147611 | 2 9/15/2008 ARG | 4039 | LINER 36X60 2 MIL CLEAR |
| 2181553 | 6 9/9/2008 ARG | 4041 | LINER 43X48 CLEAR 2 MIL |
| 2181850 | 1 9/17/2008 ARG | 4041 | LINER 43X48 CLEAR 2MIL |
| 1145091 | 8 9/15/2008 ARG | 4044 | LINER 32X42 13 BROWN 3 MIL 2002CS/WHITE |



The MACH Order Management Solution paired with the underlying UniVerse database provides a winning combination. Not only is the solution flexible in the way it handles an organization's main business functions, it has a proven track record of reliability and can scale up to the largest of operations. Without doubt, MACH Software captures and manages data critical to a retailer's success.

While MACH Software excels at capturing data, accessing and disseminating it to end-users in a meaningful format can be daunting. MITS Advanced Reporting and Business Intelligence solutions transform the raw data stored in your MACH Software solution into usable, actionable information. MITS, in collaboration with Data Management Associates Inc, provides ad hoc Business Intelligence (BI) and operational reporting solutions to make your organization's information accessible in ways not possible with any other solutions.

Trend, Rank, Explore ...

MITS Discover (Business Intelligence/OLAP)

MITS Discover provides a complete environment for fast reporting, drill-down and trending by using a specialized data structure known as a Hypercube. A featured benefit of using the MITS Discover Hypercube architecture is that it is fully integrated within UniVerse. In addition to saving infrastructure and deployment costs, you will be able to freely mix your Hypercube data with data directly from your existing files. MITS Discover Hypercubes can also be customized to keep your information as current as you require, whether it be monthly, weekly, nightly, or hourly.

By integrating BI into your organization, you give managers and executives the power to quickly analyze key business data and make better, faster business decisions—without the need for extensive training or deep understanding of database structures all while avoiding the risk of degrading the performance or security of operational databases. Through its intuitive web browser interface, users have the ability to create and utilize interactive analytical reports to track trends, identify under-performing categories, locate underlying root causes and improve business processes.

Sort, Filter, Total ...

MITS Report (Operational Reporting)

MITS Report revolutionizes access to your data. Created for operational transaction reporting, this ground breaking, web-based product is different from typical report writers and report generators because it is optimized for sorting, filtering and summarizing data. MITS Report provides true "self-serve" reporting, allowing users to build and view reports quickly and with ease.

The reporting experts at MITS recognize that many users start with a standard report and then modify it. This reporting flexibility is where MITS Report shines. By simply clicking buttons and selecting user-friendly options from drop-down lists—viewed within your Web browser—you can retrieve data, access existing reports and customize standard reports. Reports are easy to create from scratch or users can modify existing reports by adding/removing/moving columns, totalling, averaging, breaking and more.

Hypercube Applications for Your MITS Discover Business Intelligence System

Standard Sales Analysis

Within the standard sales hypercube, accumulated values will be broken down horizontally by period of time (current month/quarter/year, previous months/quarters/years, etc.).

Analyze by: Sales Dollars, Cost of Sales, Order Count, Order Line Count, Profit, Gross Margin, Trends and more...

Drill Down by: Catalog, Product, Product Group Code, Promotion Code, Channel, Inside and/or Outside Sales Representative, Customer Service Rep (CSR), Manufacturer, Vendor, or other related custom fields.

Standard Inventory Analysis

The Inventory Hypercube provides the ability to analyze inventory trends over time. A "snapshot" of inventory values will be created at the end of each month, and the snapshots from previous months will be maintained to allow for historical comparisons and analysis. In situations where the drill-down identifiers match up with drill-down identifier values in the SALES Hypercube, additional columns can be created to show Turns, Day Inventory, and Return on Inventory.

Analyze by: Quantity on Hand, Quantity Committed, Quantity on Back order, Quantity on Purchase Order, On Hand Value, Trends and more...

Drill Down by: Product, Product Group Code, Buyer, or other related custom fields.

Additional Custom Applications Available for your MACH Order Management Solution

Warehouse Productivity Analysis can be used to analyze warehouse personnel productivity.

Catalog Effectiveness Analysis provides you with the information you need to analyze the effectiveness of catalog mailings. It also allows the creation of reports based on the number of channels through which a customer has ordered. Additionally, it will provide the ability to export customer mailing information that can be imported into a mail merge program to allow for focused catalog mailing.

Open Sales Order Analysis provides the ability to analyze anticipated sales revenue through the aggregation of information related to current backlog. At the end of each business day, a "snapshot" of information about the current backlog will be created and added to the Hypercube. The snapshots from the previous two days will be maintained to allow for the analysis of changes in backlog.

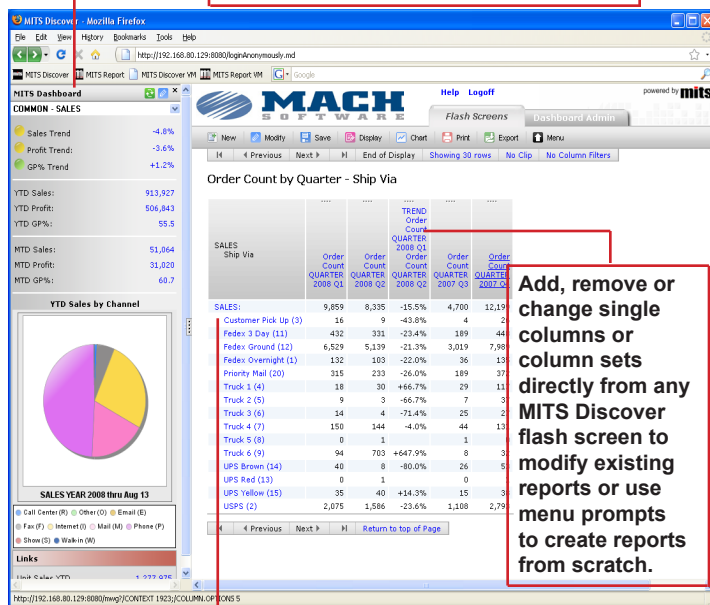
Open Purchase Order Analysis provides the ability to analyze open purchase order transactions to aid in inventory analysis and future purchasing decisions. At the end of each business day, a "snapshot" of information about the currently open purchase orders.

Closed Purchase Order Analysis provides the ability to analyze closed purchasing transactions over time. Accumulated values include quantity received and extended cost. These accumulated values will be broken down horizontally by period of time based directly on the fiscal period table that has been defined in your operational system.

"Regarding the MITS Products, we couldn't be more excited. As our training session progressed it became more and more apparent that we will see time savings in ways we hadn't anticipated. Finally, I can empower all of my managers to create reports to analyze data without training them to be part-time TCL programmers... Without a dedicated IT staff, I was a little concerned about how difficult it would be for us to work with the MITS software, but I've been very pleased with the ease of use. MITS Report is also very straight forward and I don't expect any problems with updating MITS even after creating new dictionary fields in MACH."

Tracy L. Smearman, CPA
Chief Operating Officer at Shiffler Equipment Sales, Inc.

Dynamic custom dashboards make it easy to track various critical metrics at a glance.



Start with summary information and drill down to identify top selling products and add-on sales opportunities, seasonal trends, excess stock, or access root transaction data—all with a few simple mouse clicks.